

IT IS STRONGLY RECOMMEND THAT FUSELAGE PLY PARTS ARE ASSEMBLED DRY WITHOUT GLUING ANYTHING. THE TWO L.G. MOUNTS, F5 & F4 NEED SPECIAL ATTENTION. SOME PARTS WILL BE IMPOSSIBLE TO FIT IF THE FUSELAGE BASIC STRUCTURE IS GLUED. ONCE ALL IS IN PLACE IT IS THEN READY FOR CLAMPING AND GLUING.

COCKPIT/CANOPY ASSEMBLY MADE UP OF VACUUM FORMED CANOPY, COCKPIT FLOOR (C1 & C2), 2 FORMERS C3 AND FORMER C4. FRONT OF CANOPY SLIDES UNDER COWLING. REAR END IS ATTACHED. TO FUSELAGE. BUILDERS DISCRETION.

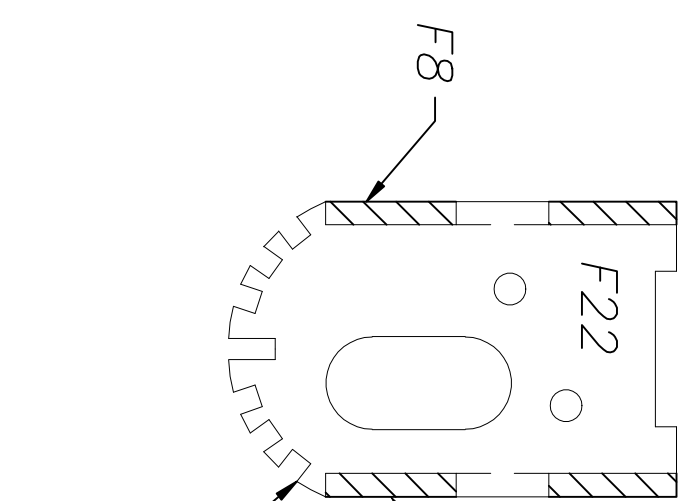
ASSEMBLY PROCESS FOR PLASTIC PARTS... 1. ATTACH COWL TO FUSELAGE. 2. ASSEMBLY AND ATTACH COCKPIT AREA. 3. ATTACH TURTLE DECK (AFTER COVERING THE FUSELAGE). 4. ATTACH FIN BLOCK, (AFTER COVERING THE FIN).

NOTE: WHEN SHAPING THE TAIL SURFACES, CHECK NMPRA RULES AS ONLY ROUNDED EDGES ARE PERMITTED.

F24 IS PART OF THE DETACHABLE TAIL ASSEMBLY. INSTALL 6-32 BLIND NUTS ON TOP OF F24 UPSIDE DOWN.

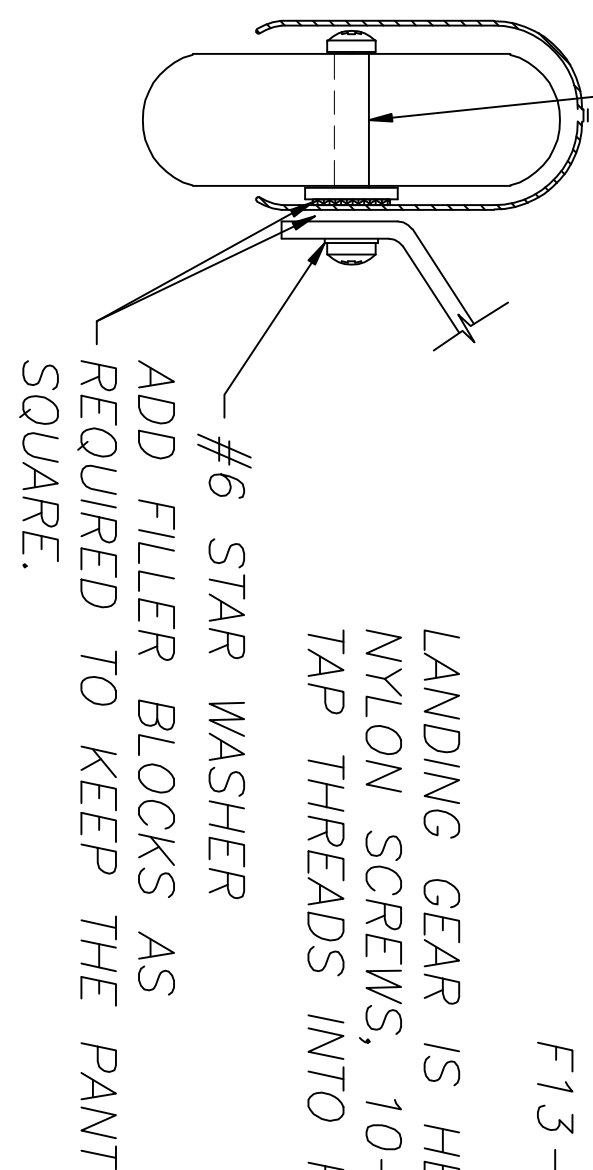
DRINKING STRAW GUIDES FOR 6-32 X 1/2" TAIL ASSEMBLY SCREWS

1/2" SQUARE BASSWOOD STRINGERS FROM F16-F22 (NOT SUPPLIED)



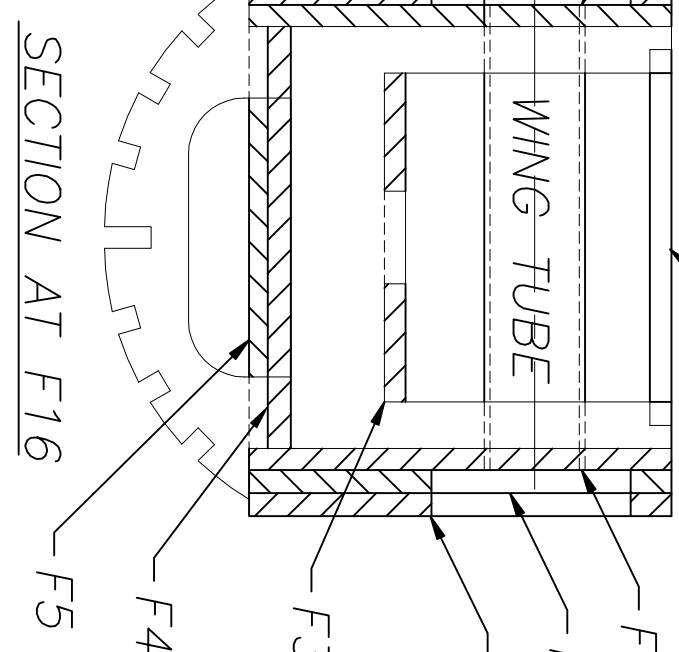
ALL FORMERS ARE SHOWN AS IF LOOKING TO THE REAR. THIS POSITIONS THE OVAL CUTOUT IN THE FORMERS ON THE LEFT OF THE FUSELAGE. THE SIMILAR CUTOUT IN SERVO/BATTERY TRAY F3 MUST BE ON THE SAME SIDE AT ASSEMBLY. THIS ENSURES ALIGNMENT OF THE PUSHROD GUIDE TUBES. THE TUBES CROSS OVER AT F20. NOTE THE POSITION OF FUSELAGE PIECES F8 & F9 AT FORMER F22. RED DUBRO PUSHROD SLEEVE IS USED WITH SOLID 2-56 PUSHRODS FROM THE SERVO TO SURFACE.

GLASS COWLING INSTALLATION. INSTALL THE MOTOR OF CHOICE. ATTACH THE WINGS. MOUNT THE PROP AND SPINNER. ALIGN THE COWL. NOSE RING WITH THE SPINNER BACKPLATE WITH THE APPROPRIATE CLEARANCE. SOME TRIMMING AT THE REAR OF THE COWL MAY BE NECESSARY. COWL IS HELED IN PLACE WITH SCREWS POSITIONED AT BUILDERS DISCRETION. SOME SCRAP PIECES OF PLY MAY HAVE TO BE GLUED TO SUPPORT CHOSEN SCREW POSITIONS.



LANDING GEAR IS HELD IN PLACE WITH NYLON SCREWS. 10-24 IS PREFERRED. TAP THREADS INTO PART F4 & F5.

#6 STAR WASHER
ADD FILLER BLOCKS AS REQUIRED TO KEEP THE PANT SQUARE.



SECTION AT F16

1/8 X 1/4 SPRUCE CAP STRIPS TOP AND BOTTOM NOT SUPPLIED

W17 WING TIP
ADD BLOCKS TOP & BOTTOM
CARVE/SAND TO SHAPE

1/6" X 1/4" BALSA
CAP STRIPS. NOT
SUPPLIED.

USE CUT OFF RIB ENDS
TO RECEIVE THE UPPER SHEETING.

SCRAP PC OF 3/8"
BALSA, SERVES AS
HARD POINT FOR
CONTROL HORN.

W19
EACH END

W18
Aileron/Wing Fillers

W17
CAP TOP & BOTTOM
WITH 1/16 X 1/4 SPRUCE
NOT SUPPLIED

W16
MAIN SPAR

W15
REAR SPAR
CAP TOP & BOTTOM
WITH 1/16 X 1/4 SPRUCE
NOT SUPPLIED

W14
REAR SPAR
CAP TOP & BOTTOM
WITH 1/16 X 1/4 SPRUCE
NOT SUPPLIED

W13
MAIN SPAR

W12
LEADING EDGE STRIP
NOT SUPPLIED

W11
LEADING EDGE KEY

W10
MUSIC WIRE JIG RODS

W9
CARDBOARD JOINER
TUBE SLEEVE

W8
ROLLED PC OF
PRINTER PAPER,
SERVO GUIDE.

W7
WING ROD TUBE

W6
OPTIONAL PAPER TUBE
FOR SERVO LEAD

W5
W15 REAR WING SHEET
TOP & BOTTOM

W4
W16 FRONT WING SHEET
TOP & BOTTOM

W3
W17 WING TIP
ADD BLOCKS TOP & BOTTOM
CARVE/SAND TO SHAPE

W2
W18 Aileron/Wing Fillers

W1
W19 EACH END

W0
SERVO TRAY WINDOW
BOTTOM SKIN ONLY

W-1
1/4 X 3/8 LEADING EDGE STRIP
NOT SUPPLIED

W-2
LEADING EDGE KEY

W-3
MUSIC WIRE JIG RODS

W-4
CARDBOARD JOINER
TUBE SLEEVE

W-5
ROLLED PC OF
PRINTER PAPER,
SERVO GUIDE.

W-6
WING ROD TUBE

W-7
OPTIONAL PAPER TUBE
FOR SERVO LEAD

W-8
W15 REAR WING SHEET
TOP & BOTTOM

W-9
W16 FRONT WING SHEET
TOP & BOTTOM

W-10
W17 WING TIP
ADD BLOCKS TOP & BOTTOM
CARVE/SAND TO SHAPE

W-11
W18 Aileron/Wing Fillers

W-12
W19 EACH END

W-13
W0 SERVO TRAY WINDOW
BOTTOM SKIN ONLY

W-14
1/4 X 3/8 LEADING EDGE STRIP
NOT SUPPLIED

W-15
LEADING EDGE KEY

W-16
MUSIC WIRE JIG RODS

W-17
CARDBOARD JOINER
TUBE SLEEVE

W-18
ROLLED PC OF
PRINTER PAPER,
SERVO GUIDE.

W-19
WING ROD TUBE

W-20
OPTIONAL PAPER TUBE
FOR SERVO LEAD

W-21
W15 REAR WING SHEET
TOP & BOTTOM

W-22
W16 FRONT WING SHEET
TOP & BOTTOM

W-23
W17 WING TIP
ADD BLOCKS TOP & BOTTOM
CARVE/SAND TO SHAPE

W-24
W18 Aileron/Wing Fillers

W-25
W19 EACH END

W-26
W0 SERVO TRAY WINDOW
BOTTOM SKIN ONLY

W-27
1/4 X 3/8 LEADING EDGE STRIP
NOT SUPPLIED

W-28
LEADING EDGE KEY

W-29
MUSIC WIRE JIG RODS

W-30
CARDBOARD JOINER
TUBE SLEEVE

W-31
ROLLED PC OF
PRINTER PAPER,
SERVO GUIDE.

W-32
WING ROD TUBE

W-33
OPTIONAL PAPER TUBE
FOR SERVO LEAD

W-34
W15 REAR WING SHEET
TOP & BOTTOM

W-35
W16 FRONT WING SHEET
TOP & BOTTOM

W-36
W17 WING TIP
ADD BLOCKS TOP & BOTTOM
CARVE/SAND TO SHAPE

W-37
W18 Aileron/Wing Fillers

W-38
W19 EACH END

W-39
W0 SERVO TRAY WINDOW
BOTTOM SKIN ONLY

W-40
1/4 X 3/8 LEADING EDGE STRIP
NOT SUPPLIED

W-41
LEADING EDGE KEY

W-42
MUSIC WIRE JIG RODS

W-43
CARDBOARD JOINER
TUBE SLEEVE

W-44
ROLLED PC OF
PRINTER PAPER,
SERVO GUIDE.

W-45
WING ROD TUBE

W-46
OPTIONAL PAPER TUBE
FOR SERVO LEAD

W-47
W15 REAR WING SHEET
TOP & BOTTOM

W-48
W16 FRONT WING SHEET
TOP & BOTTOM

W-49
W17 WING TIP
ADD BLOCKS TOP & BOTTOM
CARVE/SAND TO SHAPE

W-50
W18 Aileron/Wing Fillers

W-51
W19 EACH END

W-52
W0 SERVO TRAY WINDOW
BOTTOM SKIN ONLY

W-53
1/4 X 3/8 LEADING EDGE STRIP
NOT SUPPLIED

W-54
LEADING EDGE KEY

W-55
MUSIC WIRE JIG RODS

W-56
CARDBOARD JOINER
TUBE SLEEVE

W-57
ROLLED PC OF
PRINTER PAPER,
SERVO GUIDE.

W-58
WING ROD TUBE

W-59
OPTIONAL PAPER TUBE
FOR SERVO LEAD

W-60
W15 REAR WING SHEET
TOP & BOTTOM

W-61
W16 FRONT WING SHEET
TOP & BOTTOM

W-62
W17 WING TIP
ADD BLOCKS TOP & BOTTOM
CARVE/SAND TO SHAPE

W-63
W18 Aileron/Wing Fillers

W-64
W19 EACH END

W-65
W0 SERVO TRAY WINDOW
BOTTOM SKIN ONLY

W-66
1/4 X 3/8 LEADING EDGE STRIP
NOT SUPPLIED

W-67
LEADING EDGE KEY

W-68
MUSIC WIRE JIG RODS

W-69
CARDBOARD JOINER
TUBE SLEEVE

W-70
ROLLED PC OF
PRINTER PAPER,
SERVO GUIDE.

W-71
WING ROD TUBE

W-72
OPTIONAL PAPER TUBE
FOR SERVO LEAD

W-73
W15 REAR WING SHEET
TOP & BOTTOM

W-74
W16 FRONT WING SHEET
TOP & BOTTOM

W-75
W17 WING TIP
ADD BLOCKS TOP & BOTTOM
CARVE/SAND TO SHAPE

W-76
W18 Aileron/Wing Fillers

W-77
W19 EACH END

W-78
W0 SERVO TRAY WINDOW
BOTTOM SKIN ONLY

W-79
1/4 X 3/8 LEADING EDGE STRIP
NOT SUPPLIED

W-80
LEADING EDGE KEY

W-81
MUSIC WIRE JIG RODS

W-82
CARDBOARD JOINER
TUBE SLEEVE

W-83
ROLLED PC OF
PRINTER PAPER,
SERVO GUIDE.

W-84
WING ROD TUBE

W-85
OPTIONAL PAPER TUBE
FOR SERVO LEAD

W-86
W15 REAR WING SHEET
TOP & BOTTOM

W-87
W16 FRONT WING SHEET
TOP & BOTTOM

W-88
W17 WING TIP
ADD BLOCKS TOP & BOTTOM
CARVE/SAND TO SHAPE

W-89
W18 Aileron/Wing Fillers

W-90
W19 EACH END

W-91
W0 SERVO TRAY WINDOW
BOTTOM SKIN ONLY

W-92
1/4 X 3/8 LEADING EDGE STRIP
NOT SUPPLIED

W-93
LEADING EDGE KEY

W-94
MUSIC WIRE JIG RODS

W-95
CARDBOARD JOINER
TUBE SLEEVE

W-96
ROLLED PC OF
PRINTER PAPER,
SERVO GUIDE.

W-97
WING ROD TUBE

W-98
OPTIONAL PAPER TUBE
FOR SERVO LEAD

W-99
W15 REAR WING SHEET
TOP & BOTTOM

W-100
W16 FRONT WING SHEET
TOP & BOTTOM

W-101
W17 WING TIP
ADD BLOCKS TOP & BOTTOM
CARVE/SAND TO SHAPE

W-102
W18 Aileron/Wing Fillers

W-103
W19 EACH END

W-104
W0 SERVO TRAY WINDOW
BOTTOM SKIN ONLY

W-105
1/4 X 3/8 LEADING EDGE STRIP
NOT SUPPLIED

W-106
LEADING EDGE KEY

W-107
MUSIC WIRE JIG RODS

W-108
CARDBOARD JOINER
TUBE SLEEVE

W-109
ROLLED PC OF
PRINTER PAPER,
SERVO GUIDE.

W-110
WING ROD TUBE

W-111
OPTIONAL PAPER TUBE
FOR SERVO LEAD

W-112
W15 REAR WING SHEET
TOP & BOTTOM

W-113
W16 FRONT WING SHEET
TOP & BOTTOM

W-114
W17 WING TIP
ADD BLOCKS TOP & BOTTOM
CARVE/SAND TO SHAPE

W-115
W18 Aileron/Wing Fillers

W-116
W19 EACH END

W-117
W0 SERVO TRAY WINDOW
BOTTOM SKIN ONLY

W-118
1/4 X 3/8 LEADING EDGE STRIP
NOT SUPPLIED

W-119
LEADING EDGE KEY

W-120
MUSIC WIRE JIG RODS

W-121
CARDBOARD JOINER
TUBE SLEEVE

W-122
ROLLED PC OF
PRINTER PAPER,
SERVO GUIDE.

W-123
WING ROD TUBE

W-124
OPTIONAL PAPER TUBE
FOR SERVO LEAD

W-125
W15 REAR WING SHEET
TOP & BOTTOM

W-126
W16 FRONT WING SHEET
TOP & BOTTOM

W-127
W17 WING TIP
ADD BLOCKS TOP & BOTTOM
CARVE/SAND TO SHAPE

W-128
W18 Aileron/Wing Fillers

W-129
W19 EACH END

W-130
W0 SERVO TRAY WINDOW
BOTTOM SKIN ONLY

W-131
1/4 X 3/8 LEADING EDGE STRIP
NOT SUPPLIED

W-132
LEADING EDGE KEY

W-133
MUSIC WIRE JIG RODS

W-134
CARDBOARD JOINER
TUBE SLEEVE

W-135
ROLLED PC OF
PRINTER PAPER,
SERVO GUIDE.

W-136
WING ROD TUBE

W-137
OPTIONAL PAPER TUBE
FOR SERVO LEAD

W-138
W15 REAR WING SHEET
TOP & BOTTOM

W-139
W16 FRONT WING SHEET
TOP & BOTTOM

W-140
W17 WING TIP
ADD BLOCKS TOP & BOTTOM
CARVE/SAND TO SHAPE

W-141
W18 Aileron/Wing Fillers

W-142
W19 EACH END

W-143
W0 SERVO TRAY WINDOW
BOTTOM SKIN ONLY

W-144
1/4 X 3/8 LEADING EDGE STRIP
NOT SUPPLIED

W-145
LEADING EDGE KEY

W-146
MUSIC WIRE JIG RODS

W-147
CARDBOARD JOINER
TUBE SLEEVE

W-148
ROLLED PC OF
PRINTER PAPER,
SERVO GUIDE.

W-149
WING ROD TUBE

W-150
OPTIONAL PAPER TUBE
FOR SERVO LEAD

W-151
W15 REAR WING SHEET
TOP & BOTTOM

W-152
W16 FRONT WING SHEET
TOP & BOTTOM

W-153
W17 WING TIP
ADD BLOCKS TOP & BOTTOM
CARVE/SAND TO SHAPE

W-154
W18 Aileron/Wing Fillers

W-155
W19 EACH END

W-156
W0 SERVO TRAY WINDOW
BOTTOM SKIN ONLY

W-157
1/4 X 3/8 LEADING EDGE STRIP
NOT SUPPLIED

W-158
LEADING EDGE KEY

W-159
MUSIC WIRE JIG RODS

W-160
CARDBOARD JOINER
TUBE SLEEVE

W-161
ROLLED PC OF
PRINTER PAPER,
SERVO GUIDE.

W-162
WING ROD TUBE

W-163
OPTIONAL PAPER TUBE
FOR SERVO LEAD

W-164
W15 REAR WING SHEET
TOP & BOTTOM

W-165
W16 FRONT WING SHEET
TOP & BOTTOM

W-166
W17 WING TIP
ADD BLOCKS TOP & BOTTOM
CARVE/SAND TO SHAPE

W-167
W18 Aileron/Wing Fillers

W-168
W19 EACH END

W-169
W0 SERVO TRAY WINDOW
BOTTOM SKIN ONLY

W-170
1/4 X 3/8 LEADING EDGE STRIP
NOT SUPPLIED

W-171
LEADING EDGE KEY

W-172
MUSIC WIRE JIG RODS

W-173
CARDBOARD JOINER
TUBE SLEEVE

W-174
ROLLED PC OF
PRINTER PAPER,
SERVO GUIDE.

W-175
WING ROD TUBE

W-176
OPTIONAL PAPER TUBE
FOR SERVO LEAD

W-177
W15 REAR WING SHEET
TOP & BOTTOM

W-178
W16 FRONT WING SHEET
TOP & BOTTOM

W-179
W17 WING TIP
ADD BLOCKS TOP & BOTTOM
CARVE/SAND TO SHAPE

W-180
W18 Aileron/Wing Fillers